

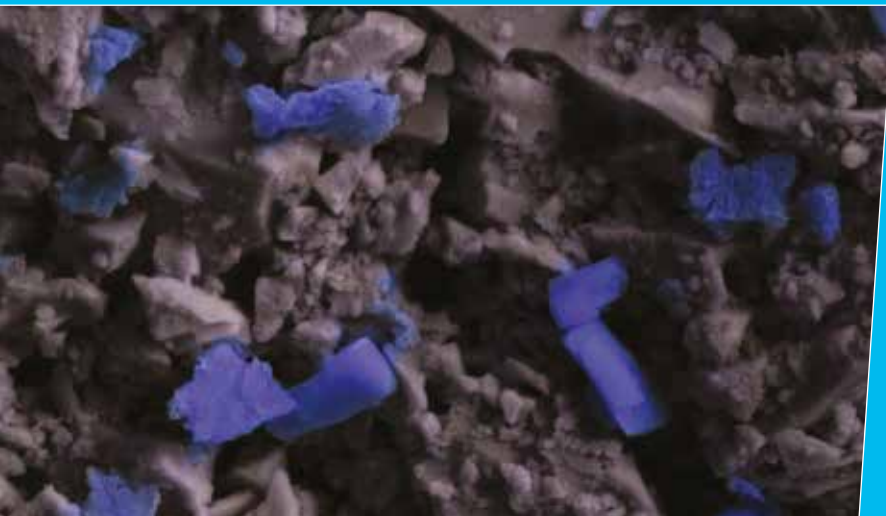


# Suspend<sup>®</sup> FLEXX

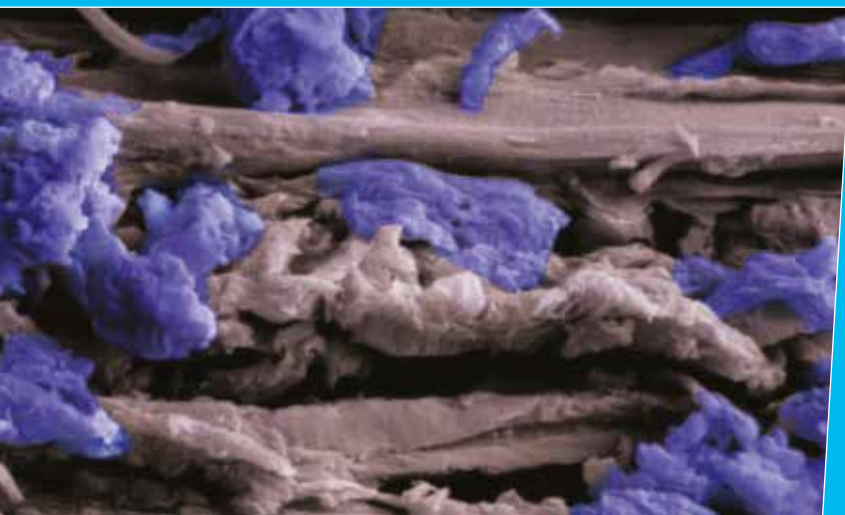
## A new era of formulation technology

### // Features and Benefits

- Flexibility of application rates
- Longer lasting residual
- Patented leading-edge **Partix™ Formulation Technology**
- Broad spectrum of activity
- Excellent for use outdoors – bricks, mulch, render, concrete
- Cost effective



Deltamethrin crystals forming at interface of carrier and aqueous solution



### // Technical Information

Suspend<sup>®</sup> Flexx is a new, innovative general insecticide from Bayer containing leading-edge patented **Partix™ Formulation Technology**.

Scientifically-proven to maximise the active ingredient, this world-first technology allows the active to be more readily available on surfaces and enhances the efficacy and residual effectiveness.

Suspend Flexx can be used both indoors and outdoors, and offers flexible application rates.

#### **New class of microcap:**

- Not a capsule suspension
- Not a micro emulsion
- Formulation is a matrix capsule

#### **Unique feature, differentiating from other micro caps:**

- They are larger with a range of 15-30  $\mu\text{m}$
- AI is not encapsulated inside but AI is concentrated up on the surface (= carrier concept)

### // Target Pests

Ants, Bedbugs, Bird mites, Carpet Beetles, Cockroaches, Clothes moths, Fleas, Litter Beetle, Mosquitoes and Flies, Silverfish, Spiders, Stored Product Pests, Ticks, Stable Fly

### // Areas of Use

Internal and external areas and surrounds of domestic, commercial, industrial and public buildings and structures, including farm buildings, meatworks and poultry sheds.

# Innovative

A new era of formulation technology

## Ideal situations

- // Outdoors – punchy performance with enhanced residual
  - bricks, mulch, render, concrete
- // Indoors – Flexibility to dial in the perfect dose rate to match your service frequency and save \$\$\$\$
  - Regular maintenance service at low rate
  - Sensitive food processing areas
  - High maintenance sites (regularly cleaned areas)

## Application rates and delivery

Flexible label, allowing for extremely low dose rates to be effective, reducing cost and chemical footprint:

- // **10mL/L water (high rate):** Use this rate for control of bedbugs and cat fleas and for the control of crawling and flying insects where a residual of at least 12 weeks is required under difficult conditions of high pest pressure or aggressive surfaces.
- // **5mL/L water (standard rate):** Use this rate for initial / cleanout control of cockroaches, ants, spiders, ticks and other crawling insects and for initial / cleanout control of house flies, mosquitoes and other flying insects where a residual of 12 weeks is required. Use this rate also for follow-up treatment against bed-bugs.
- // **2.5mL/L water (maintenance rate):** For maintenance control of crawling and flying insects where a residual of 6-8 weeks is required.
- // **1.6mL/L water (low maintenance rate):** For maintenance control of crawling and flying insects where a residual of 2-4 weeks is required.

## Enhanced treatment options for Suspend Flexx

With the dose rates listed, a personalised treatment can be achieved based on:

- // Level of infestation
- // Treatment being carried out (based on insect)
- // Cost saving requirement
- // Residual efficacy required
- // Low chemical application requirements for sensitive areas
- // Aggressive surfaces

## Product profile

### Active ingredient:

25g/L Deltamethrin

### Insecticide group:

Synthetic pyrethroid (3A)

### Formulation type:

Suspension concentrate

### Pack size:

3L pack

**Product safety:** Due to the advanced formulation technology, enhanced efficacy can be achieved using lower rates than conventional SC formulations.

**Personal protective equipment:** Sensitive workers should wear protective clothing.

### Regulatory information

APVMA Product Number: 81960

Poisons Schedule: Schedule 5 – Caution

**HACCP certification:** Certified for use as a pest control substance in food and beverage facilities controlled by a HACCP based food safety program.

**Impact on Environment:** All pesticides are regulated under the Agricultural and Veterinary Chemicals Code Act 1994 to ensure that they do not pose an unacceptable risk to human health and the environment. For information regarding pesticide regulatory process please visit the Australian Pesticides and Veterinary Medicines Authority website at [www.apvma.gov.au](http://www.apvma.gov.au)



Bayer CropScience Pty. Ltd.,  
Environmental Science Australia,  
Level 1, 8 Redfern Road, Hawthorn East, Vic. 3123  
Technical Enquiries: 1800 804 479 [es.bayer.com.au](http://es.bayer.com.au)  
Suspend® is a Registered Trademark of the Bayer Group